





## We are Frieze Frames

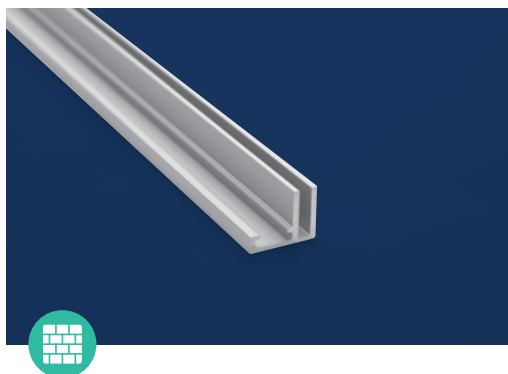
At Frieze Frame, we design, extrude, coat, convert, and supply aluminium fabric frame solutions for the large format fabric print market. We take pride in the fact that all of our extrusions are designed and made right here in the UK.



### Frame H

An extremely versatile profile that can be used to create easy-change fabric installations in any aperture or window bay. Its light yet strong nature makes Frame H a perfect option for shop window displays where the extrusion can be left in place with minimal visual appearance then utilised when required.

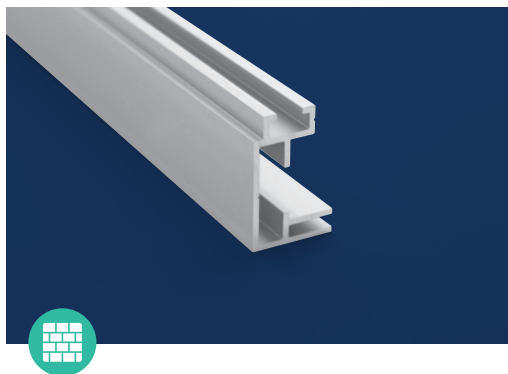
Weight per linear metre: 0.23kg



### Frame 17L

A lightweight aluminium extrusion with a 17mm edge profile and 2mm wall depth finished in anodised silver. Frame 17 is typically used for wall-fitting applications. Frame 17 uses Frieze Frame's single corner system with the brackets made from clear coated steel for optimum strength.

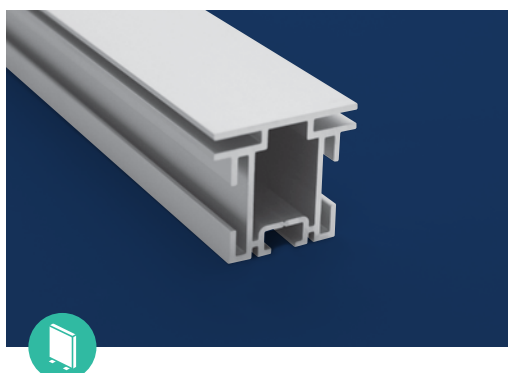
Weight per linear metre: 0.29kg



### Frame 27

A lightweight aluminium extrusion with a 27mm edge profile and 2mm wall depth finished in anodised silver. Frame 27 is typically used for wall-fitting applications however its ability to be braced also lends it to single-sided hanging treatments. Frame 27 uses Frieze Frame's double corner system with the brackets made from clear coated steel for optimum strength.

Weight per linear metre: 0.69kg



### Frame 47S

A lightweight aluminium extrusion with a 47mm edge profile and 2mm wall depth finished in anodised silver. Frame 47S with its smooth edge is typically used for freestanding, large format double-sided frames either floor standing or hanging. Its super strong construction also makes it fantastic for partition screens and fabric structures.

Weight per linear metre: 1.35kg



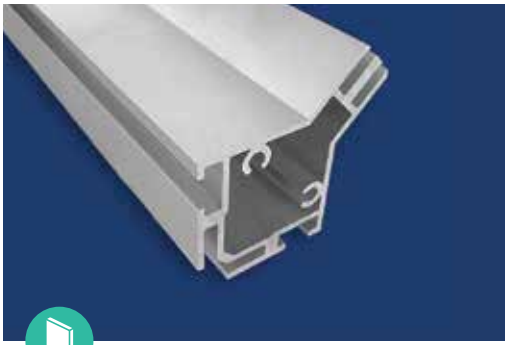
Lightbox



Wall Mounted



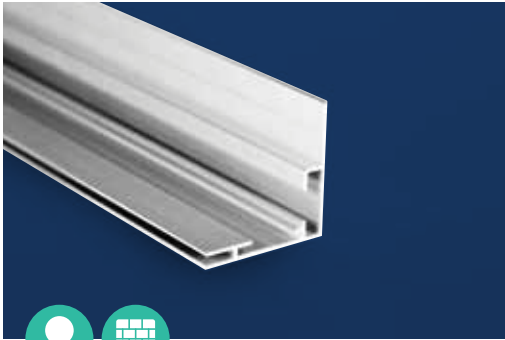
Freestanding



## Frame 47 Cube

A lightweight aluminium extrusion with a 47mm edge profile and 2mm wall depth finished in anodised silver. Frame 47 with its distinctive grooved edge is typically used for freestanding, large format double sided frames either floor standing or hanging. Its external grooved edge is great for retro fitting over head lights and various point of sale cable systems.

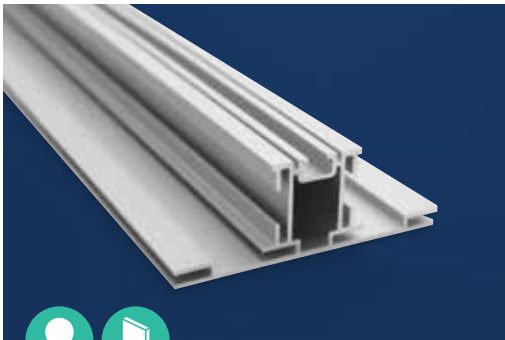
Weight per linear metre: 1.39kg



## Frame 65

A lightweight aluminium extrusion with a 65mm edge profile and 2mm wall depth finished in anodised silver. Frame 65 is typically used for wall-fitting lightbox installations. The extrusion can be used with either Frieze Frame's rear illumination LED plates or our LED 300 edgelit module system.

Weight per linear metre: 0.93kg



## Frame 120

A lightweight aluminium extrusion with a 120mm edge profile and 2mm wall depth finished in anodised silver. Frame 120 is typically used for double sided free-standing lightbox installations. The extrusion really comes to life when used with Frieze Frame's LED 300 edgelit module system.

Weight per linear metre: 2.11kg



## Frame Brace

A lightweight aluminium extrusion with a 2mm wall depth finished in anodised silver. Our Frame Brace features an integral connector groove to ensure firm fitting utilising Frieze Frames's brace connector system. Connector components are made from laser cut steel which then bolts together to ensure maximum strength.

Weight per linear metre: 0.63kg



## LED Edge 300 / 470

Frieze Frame's LED edge modules utilise super-bright LED chips and tailored shades to produce a vibrant light output and throw. Connection methods are possible in several formats to cater for various box sizes and combinations.

300 Consumption: 8.4w @ 24v per module

470 Consumption: 12.4w @ 24v per module



## Fabric Tension Frame System

Elegantly simple, practical, light yet strong - these key aspects are the cornerstones of our design philosophy at Frieze Frame

Years of development of our extrusion design tied in to practical on-site experience has given us a range of fabric tension frame systems that we believe it matches its core application perfectly. We develop our extrusions and parts with a calm balance of form and function taking care to consider the end user, the application and build process in the intended environments.

All our aluminum framing profiles are extruded with a 2mm wall thickness and our parts are crafted from pressed or laser cut coated steel for optimum strength and durability.

Our parts kits use widely available screws and allen fixings packed in bagged sets to ensure you get the right parts for the your application. Our lightbox solutions are all super efficient LED-based and are designed to be slim, functional and scalable with on site simplicity the main aim.

We can also offer bespoke colour finish, design and production of parts and extrusions. If you have an application in mind we can talk through the options and then design the solution. Our ongoing commitment is to develop trade based solutions around our clients market driven needs and to do so without conflicting with our core beliefs.

